

# Teton

Patio Covers & Attached Carports  
flush panel model

PORCHES

PERGOLAS

DOOR  
CANOPIES

METAL  
AWNINGS

FABRIC  
AWNINGS

WALL  
SYSTEMS

ACCESS  
RAMPS

MISC



Shown with optional SIDE POST PLATES

**FEATURES:**

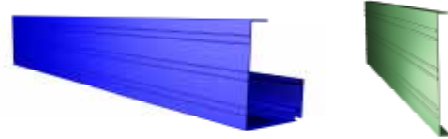
- Engineered for all climates. See table below.  
For high winds, pick higher load model.
- Roll-formed, 8 in. wide, flush panel eliminates areas for birds to nest with smooth design
- Adjustable post placement with 3 in. x 8 in. beam, set back 6- 24 in. from front, max 12' from house
- Beam has embossed woodgrain finish
- Most components are pre-punched, making installation fast and easy
- Extruded aluminum post, 3 in. square
- Extruded aluminum gutter and side trim
- Two piece wall channel to adjust roof slope
- Scuppers are sent to drain water from front gutter  
Optional downspout kit available

**Teton 8" Flat Panel**  
**Engineering Data for Open Structures**  
Aluminum 3004 alloy

ULTIMATE LOAD TABLE - 8" FLAT ROOF PANEL											
# PER SQ FT											
Projection	4'-6"	5'-8"	6'-9"	7'-11"	9'-0"	10'-2"	11'-4"	12'-5"	13'-7"	14'-8"	
Simple Span	4'-0"	5'-0"	6'-0"	7'-0"	8'-0"	9'-0"	10'-0"	11'-0"	12'-0"	13'-0"	
Overhang	0'-6"	0'-8"	0'-9"	0'-11"	1'-0"	1'-2"	1'-4"	1'-5"	1'-7"	1'-8"	
Roof Panel Thickness	.025	60	60	56	44	35	30	24	20	17	14
	.032	60	60	60	60	53	44	37	32	27	23
	.040	60	60	60	60	60	60	60	56	47	40

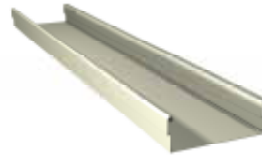
## COMPONENTS

Extruded front gutter and side trim, aluminum



Rollformed, 8" width aluminum roof panels slide or snap together and are prepunched for ease of installation.

Available in 3 thickness of metal for the support you need.

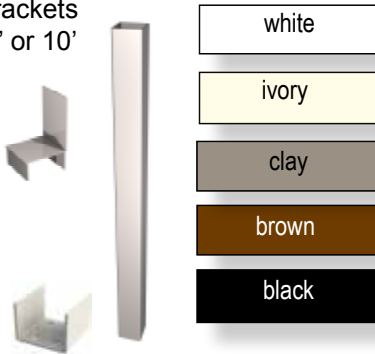


Extruded aluminum 2 piece wall hanger allows virtually any roof pitch and protects against damage from ground heaving. Pre-punched for ease of installation.



Post 3" square with brackets extruded aluminum 8' or 10'

Mount under gutter or optional beam



- Projection from wall to front of cover in 1" increments.
- Width along wall in 8" increments
- Choose Roof Panel Thickness (Gauge) from load chart
- Add optional support beam
- Wall Mounting: Check wall for obstructions
- Will posts mount to:
  - Concrete slab
  - Wood Deck
  - Buried in ground...use 10' post/column

## OPTIONAL COMPONENTS

Choice of Support Beam:

Rollformed 3"x 8" Support Beam



Extruded, 3" square Support Beam



Both beams allow posts to be set back up to 24" from front of cover.

Side post plates, woodlook aluminum  
8' 8" set  
10' 8" set



Downspout Kit  
vinyl 10' tube, all elbows, fittings straps and tilt up divertor

White  
Ivory  
Brown



PORCHES

PERGOLAS

DOOR  
CANOPIES

METAL  
AWNINGS

FABRIC  
AWNINGS

WALL  
SYSTEMS

ACCESS  
RAMPS

MISC